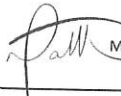


ECOHIVE COMPLEX EMERGENCY RESPONSE PLAN


Ing. Roberta Apap
Professional Officer - Fire Engineer
WasteServ Malta Ltd

Prepared by:


Ing. Roberta Apap
Professional – Fire Engineer


Ing. Nathan Gatt
Manager – Wet Waste, Gas Plants
& Leachate Management
Wasteserv Ltd.

Reviewed by:

Ing. Nathan Gatt
Manager – Wet Waste Plants, Gas Plants &
Leachate Management

Reviewed by:



Stefan Salomone
Senior Manager – Health & Safety
Wasteserv Malta Ltd.
Stefan Salomone
Manager - H&S, Fire Prevention &
Maintenance



Reviewed by:

28/11/2022

Ing. Karl Mizzi
Manager – Dry Waste Plants & Landfills


Helder Rocha
Chief Operations Officer
Wasteserv Malta Ltd

Approved by:

Helder Rocha
Chief Operations Officer

Date:

06/12/2022

Copyright of this document and its contents rests solely with WasteServ Malta Ltd. Unauthorised reproduction of this document or communication of its contents to third parties, without written permission, is strictly forbidden. This confidential document may be passed to third parties only under written instructions from the Directors of WasteServ Malta Ltd. Users/receivers of such documentation are still bound by confidentiality if these documents are in their possession. Any third parties, divulging information from this document, without the written consent of the Directors of WasteServ Malta Ltd will be prosecuted.

1 CHANGE HISTORY

[illegible]

2 TABLE OF CONTENTS

1	CHANGE HISTORY	2
2	TABLE OF CONTENTS.....	3
3	LIST OF APPENDICES	4
4	INTRODUCTION	5
	AIMS.....	7
	LIMITATIONS.....	7
	NOTES.....	7
5	DEFINITIONS	8
	EMERGENCY RESPONSE TEAM.....	8
	TRAFFIC CONTROL	8
	ASSEMBLY POINT.....	8
	STAFF.....	8
	COMMUNICATIONS WITH MEDIA AND GENERAL PUBLIC.....	8
	CONTRACTORS	8
	VISITORS AND VULNERABLE PERSONS	9
	CIVIL PROTECTION DEPARTMENT (CPD)	9
	OCCUPATIONAL HEALTH & SAFETY AUTHORITY (OHSA).....	9
	ENVIRONMENT AND RESOURCES AUTHORITY (ERA).....	9
	FIRE AND/OR EXPLOSION	9
	INJURIES	10
	SPILL.....	10
6	ACTIONS TO BE TAKEN.....	11
	6.1 FIRE – MALTA-NORTH.....	11
	6.2 FIRE – RTO GAS PLANT	15
	6.3 FIRE – AD PLANT.....	18
	6.4 FIRE – LANDFILL DAY	22
	6.5 FIRE – LANDFILL NIGHT.....	26
	6.6 INJURY	29
	LIST OF PERSONNEL TO BE KEPT ON SITE.....	34

3 LIST OF APPENDICES

Appendix I	Controlled Document 108a ECOHIVE Contact Numbers
Appendix II	Controlled Document 108b ECOHIVE Fire Safety Drawings
Appendix III	Controlled Document 108c ECOHIVE Emergency Equipment
Appendix IV	Controlled Document 108d ECOHIVE Chemicals
Appendix V	Controlled Document 108e ECOHIVE ATEX Zones

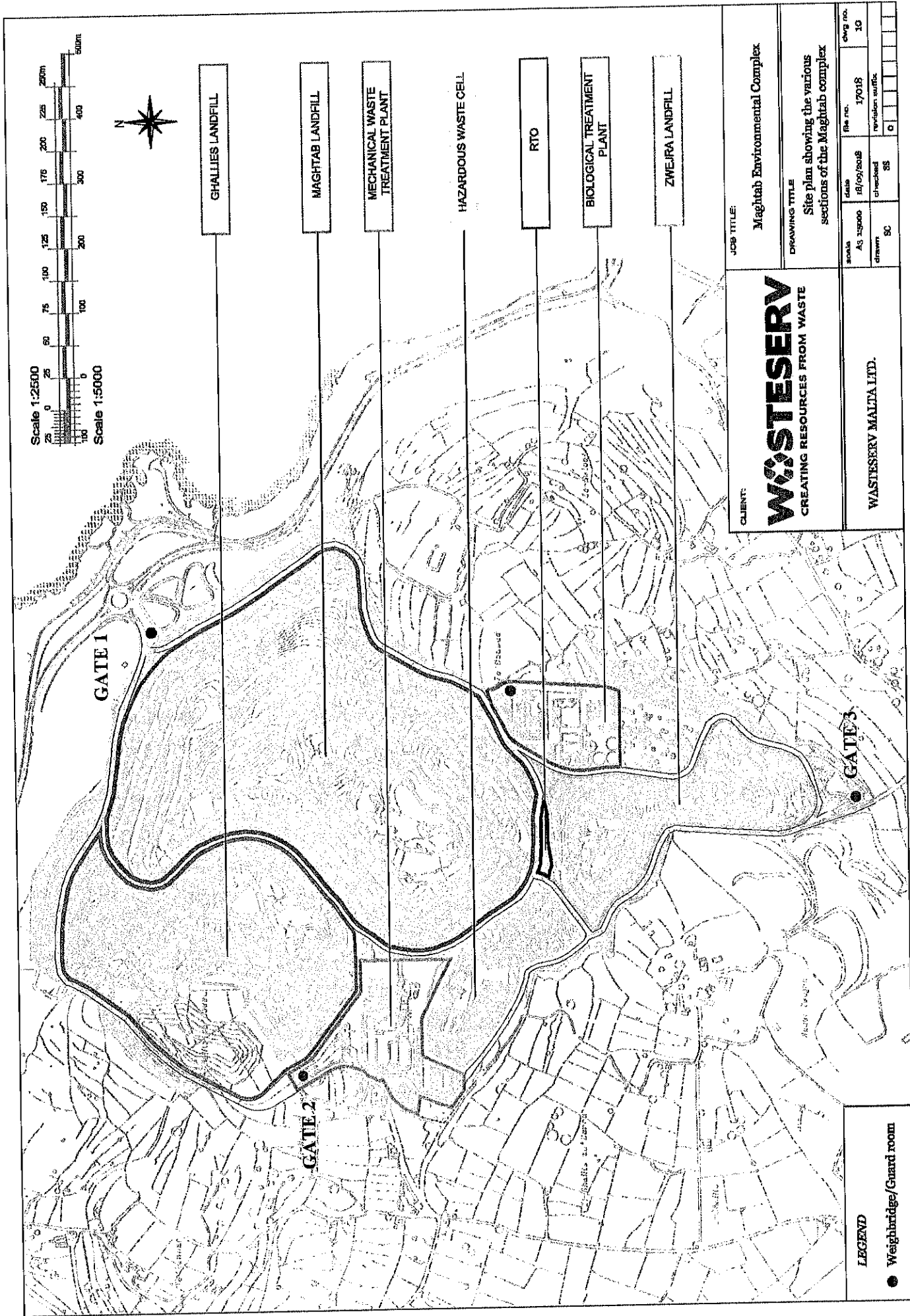
4 INTRODUCTION

The plan is intended to set up standard procedures in the event of emergencies, allocating responsibilities and the immediate action to be taken in the event of fire, injury, and oil or chemical spill, in order to minimise the consequences of any incident. This plan meets the requirements for contingency planning as required by LN37 of 2003, as amended by Legal Notices 6 of 2005 and LN4 of 2014 (Article 30 of Directive 2012/18/EU of the European Parliament and of the Council amending Council Directive 96/82/EC on the control of major-accident hazards involving dangerous substances).

The plan will ensure that all efforts are co-ordinated through one point and to a common aim. For the purposes of this plan, the ECOHIVE Complex will be separated into three (3) distinct areas as follows:

1. Ghallis, Zwejra and Maghtab Landfill, the RTO Gas Plant, and the new landfill
2. Malta-North Mechanical Waste Treatment Plant
3. Malta-North Biological Waste Treatment Plant

The location of each of the above areas can be found in site plan overleaf.



Aims

- Ensuring safety of persons (plant personnel, public, and response personnel).
- Minimising or avoiding damage to plant, third party property and to the environment.
- Minimising or avoiding financial loss.

Limitations

The scope of this plan is limited to fire, injury, and chemical spills and will be implemented as determined by the Responsible Person on site. However the principles involved are adaptable to other emergencies.

Notes

This plan has been distributed to the following authorities:

- Environment and Resources Authority (ERA)
- Occupational Health & Safety Authority (OHSA)
- Civil Protection Department (CPD)

Controlled copies of this document shall be made available at the new and old Weighbridge, Coast Road Weighbridge and at the AD Guard Room.

5 DEFINITIONS

Emergency Response Team

The **Emergency Response Team (ERT)** shall be made up of a group of key employees selected in accordance to their role and/or their physical location within the company. All members of the ERT shall receive adequate training in their role.

The **ERT (Affected Area)** is the member of the ERT who is closest to the area where the emergency occurred.

Traffic Control

In case of emergencies, no vehicles will be allowed to enter or leave the site unless this is necessary to make way for emergency services to enter the facility.

This task will be handled by the **Weighbridge Operators / Security**.

Assembly Point

The Assembly Points for the ECOHIVE Complex are located as follows:

- Ghallis landfill – near the Site Office;
- RTO Gas Plant – near the power wash station;
- Malta-North Mechanical Treatment Plant – near the Canteen
- Malta-North Anaerobic Digestion Plant – outside the AD guard room

The Assembly Points are clearly indicated with a green sign and wording '*Assembly Point*'.

Staff

All personnel not forming part of the **Emergency Response Team**.

Communications with Media and General Public

In case of an emergency situation, communications with the media and the general public will be handled by the **Managing Professional - PR Corporate Image and Education** only.

In addition to the **Managing Professional - PR Corporate Image and Education**, the **Chief Executive Officer** is to be informed of the incident/emergency as soon as possible.

Contractors

Contractors working on-site must be briefed on safety procedures on their first day at the facility and prior to start working.

Visitors and Vulnerable persons

All visitors entering the Plant shall be required to sign in at reception. Visitors shall be provided with information about the emergency plan of the site.

Vulnerable persons are those persons who are at more risk than others in cases of an emergency. This includes but is not limited to visitors, young persons, pregnant or breastfeeding workers, persons with different abilities, and injured persons.

The ERT must ensure the safety of any vulnerable persons within their area of control by assigning personnel to assist them throughout the emergency.

Civil Protection Department (CPD)

The Civil Protection Department (CPD) are responsible for fire fighting and rescue operations, emergency planning and handling of major incidents.

CPD can be contacted through the general emergency number:

Emergency: 112

Occupational Health & Safety Authority (OHSA)

The OHSA is the local Authority for all Health & Safety matters. The authority must be alerted of any incident resulting in injuries to workers as per ADM HS02 Incident Reporting and Investigating Procedure.

Environment and Resources Authority (ERA)

ERA is responsible for general environmental issues. The authority must be informed by the Professional-Compliance in case of fire and/or any spills reaching sewer, road, soil and/or sea as per ADM HS02 Incident Reporting and Investigating Procedure.

Fire and/or Explosion

A fire or explosion could generate highly toxic or corrosive fumes. Flying debris might result from explosions or compressed gas cylinder failure. Process system disruption, loss of plant control, and breach of process system boundaries could result from the flying debris. In addition, heavy smoke could disrupt the operation of the ventilation system.

For the purpose of the Emergency Response Plan, fires have been categorised into three (3) tiers as follows:

- Tier 1 Fires – these are small fires which can be easily extinguished using portable fire extinguishers;
- Tier 2 Fires – these are larger fires which require the use of fire water, but which do not exceed an area of 8m³.

- Tier 3 Fires – these are large fires which require the use of fire water and exceed an area of 8m³.

Injuries

A minor injury is an injury and/or ill health condition requiring first aid treatment, and/or which leads to not more than 3 days off work.

A moderate injury is an injury requiring medical attention, and/or leading to more than 3 days off work, and/or illness requiring medical treatment but not leading to a chronic health condition.

A major injury is an injury resulting in the person being detained in hospital for more than 24 hours (except for observation), and/or an injury leading to more than 10 days off work, and/or an illness leading to a chronic health condition. A major injury will result in one or more of the following:

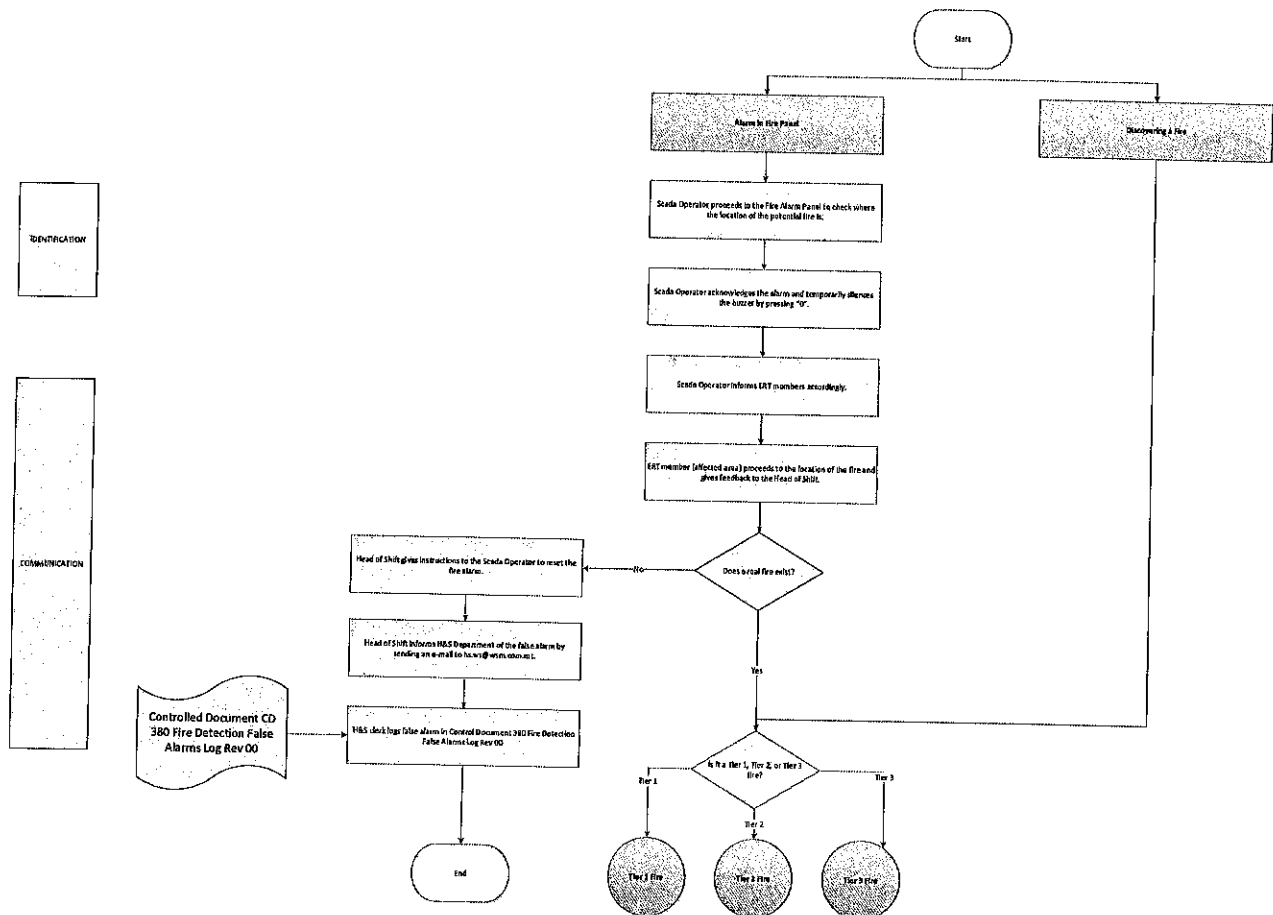
- fracture of the skull, spine or pelvis;
- fracture of any bone other than the wrist or ankle;
- amputation of a hand or foot;
- the loss of sight of an eye; or
- any other injury which results in the person injured being detained in hospital for more than twenty-four hours other than for observation.

Spill

Any spills shall be cleaned using the spill kits provided and shall be reported.

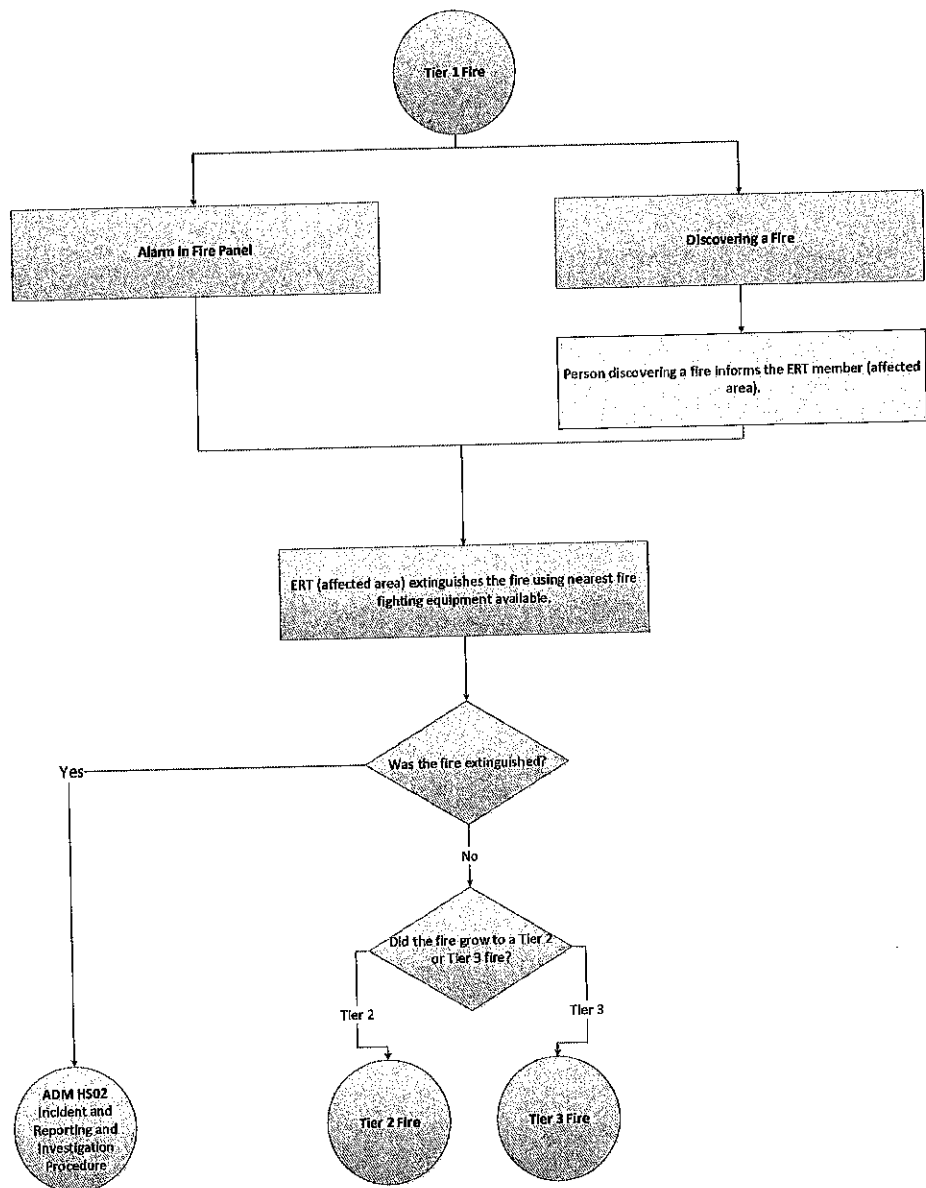
6 ACTIONS TO BE TAKEN

6.1 Fire – Malta-North

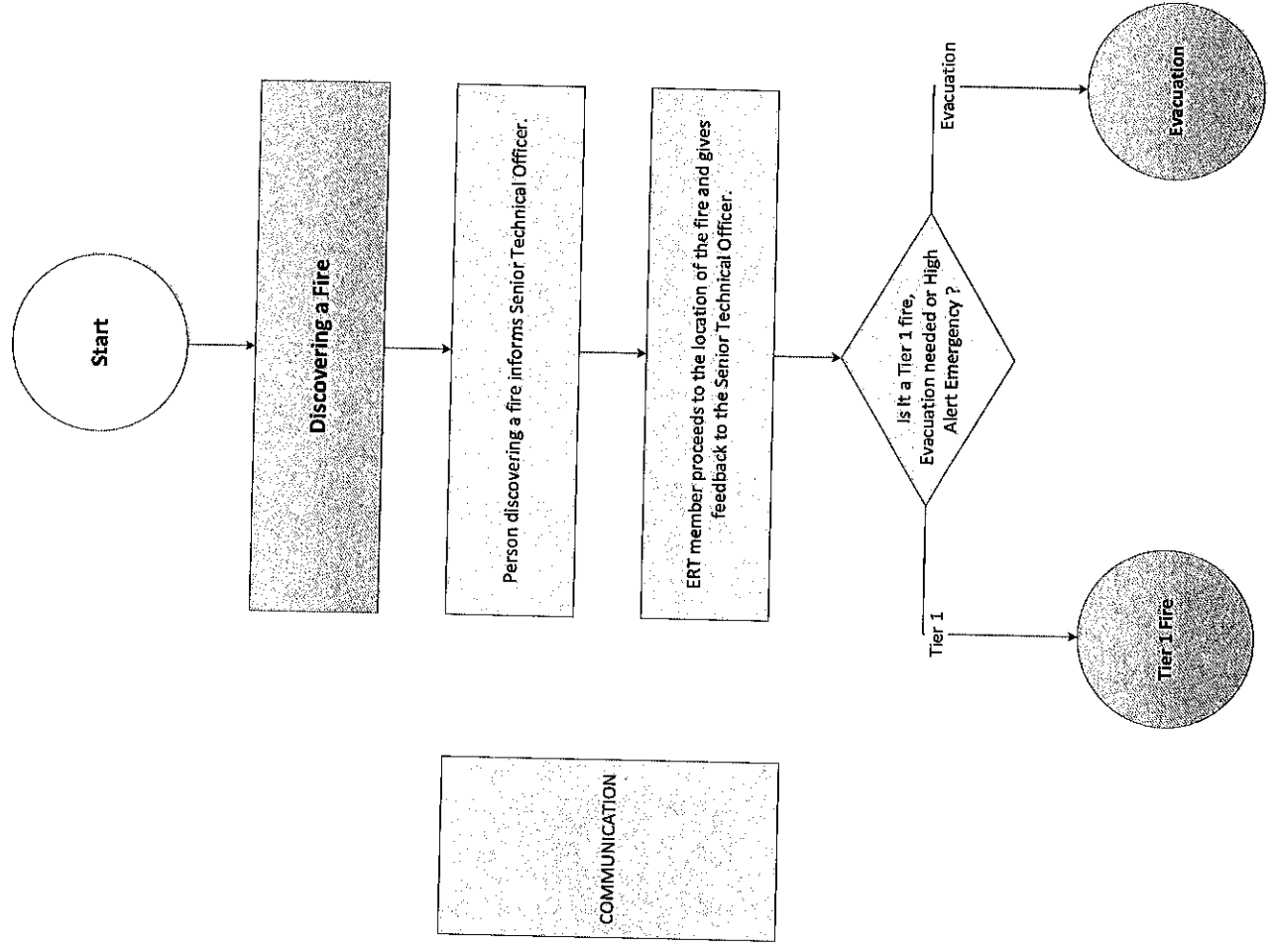


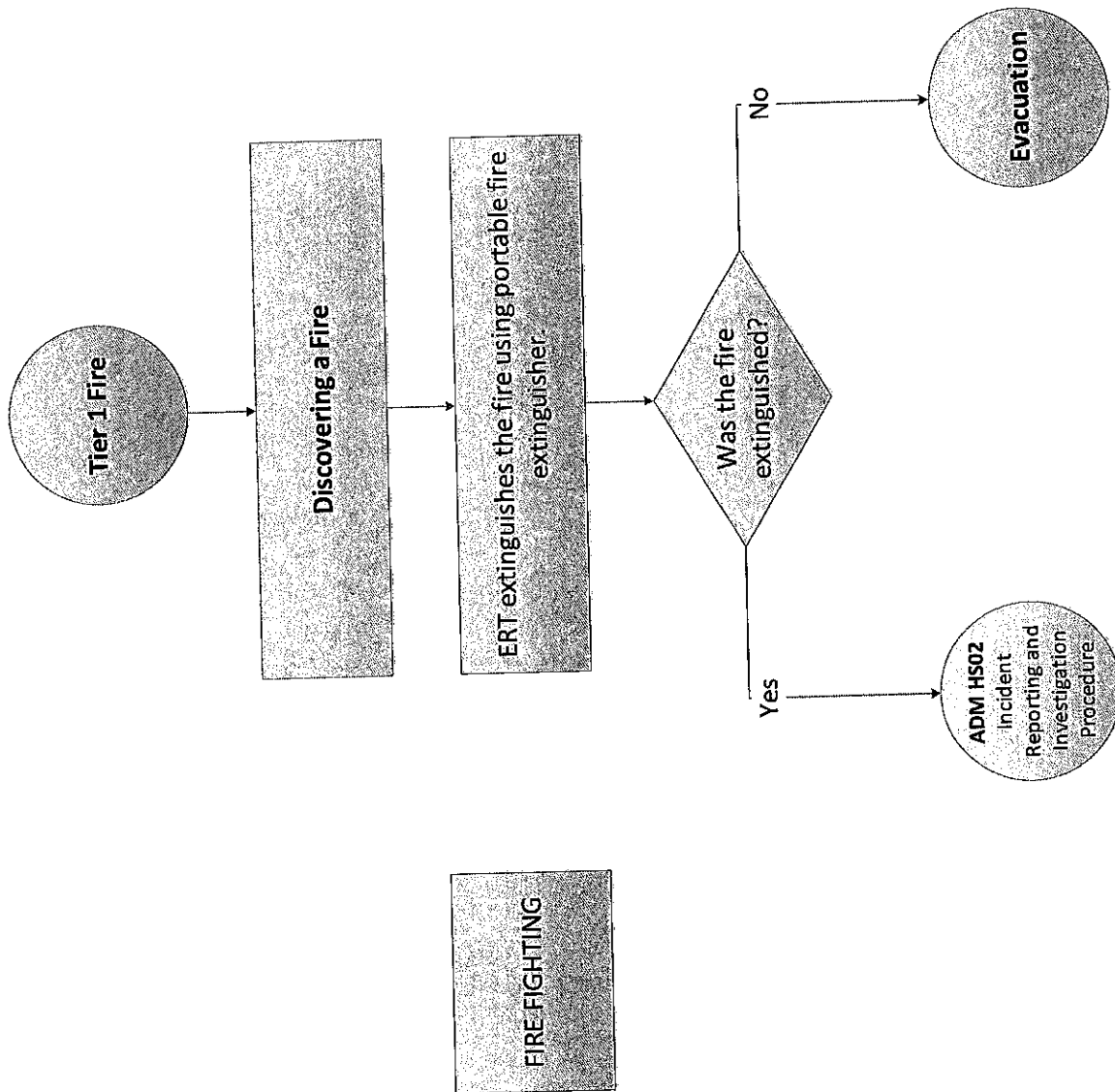
COMMUNICATION

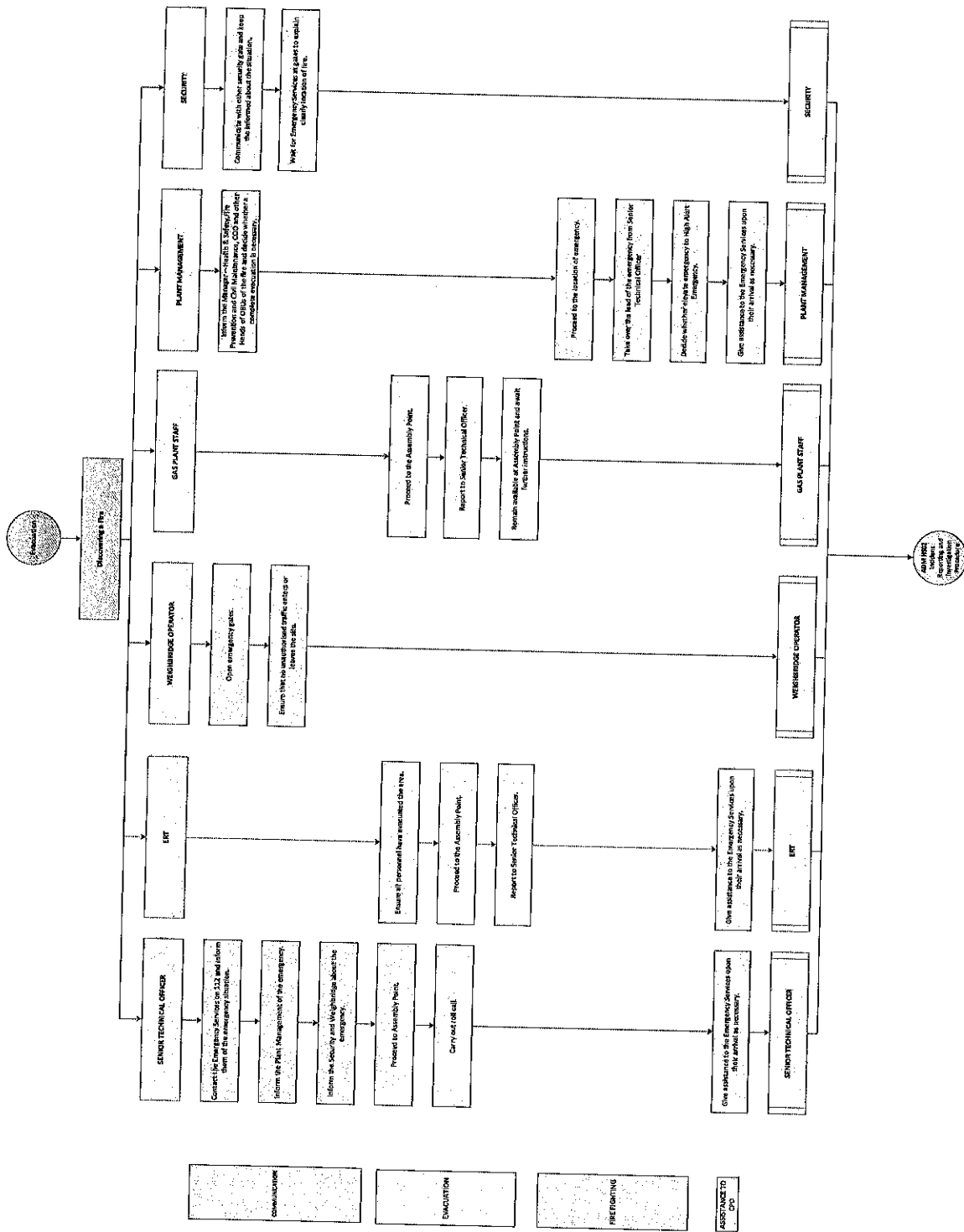
FIRE FIGHTING



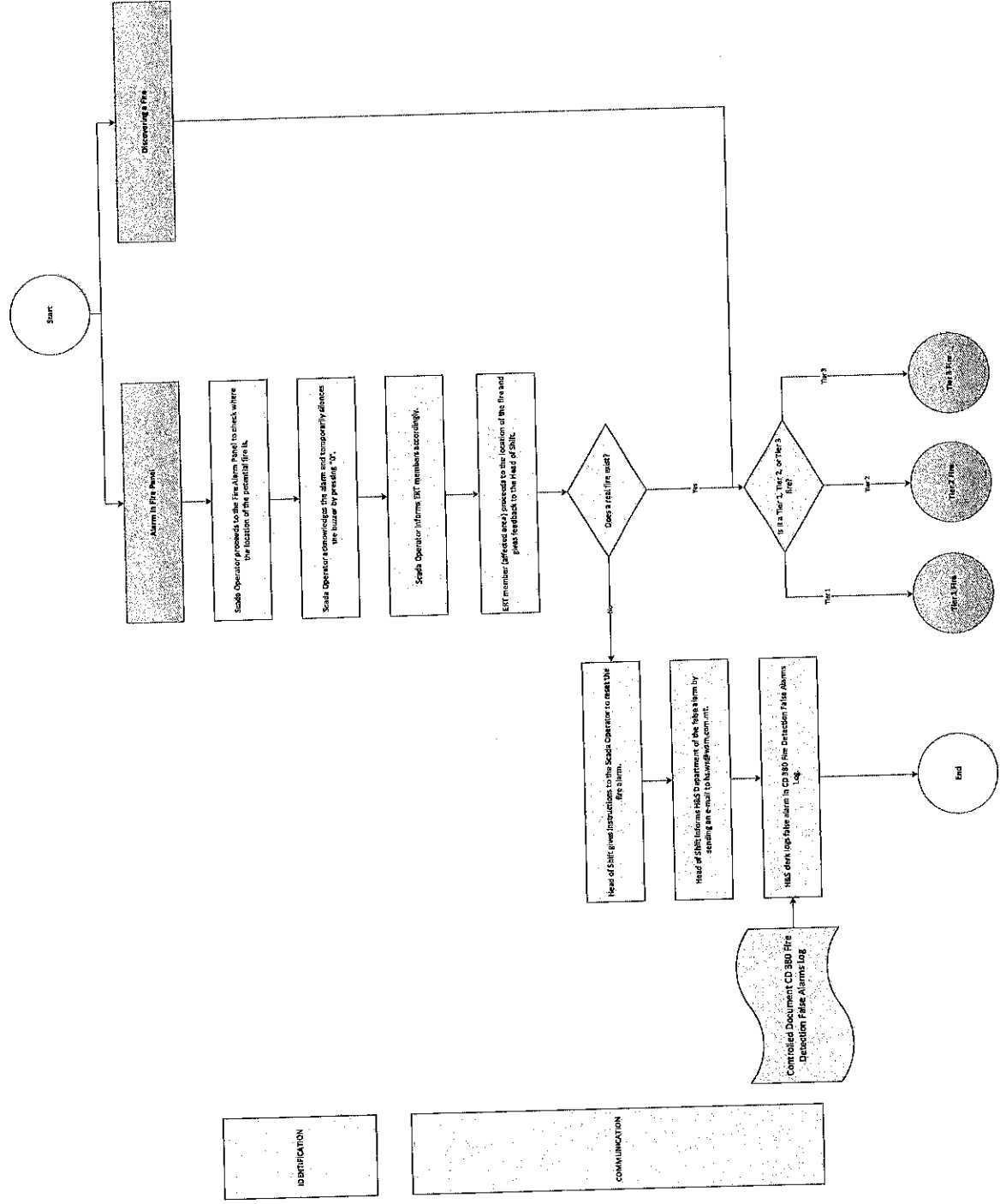
6.2 Fire – RTO Gas Plant

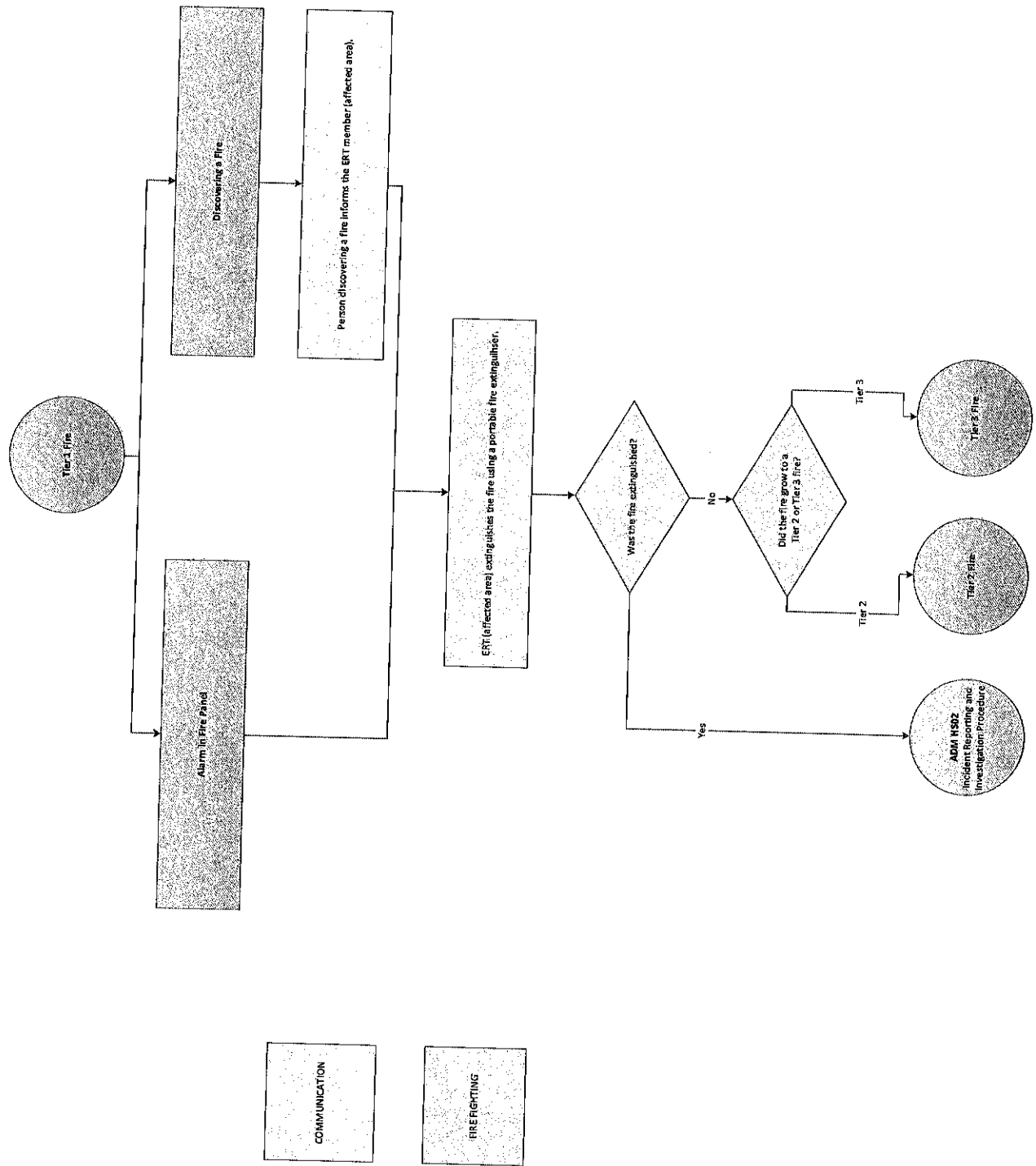


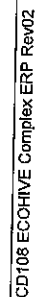




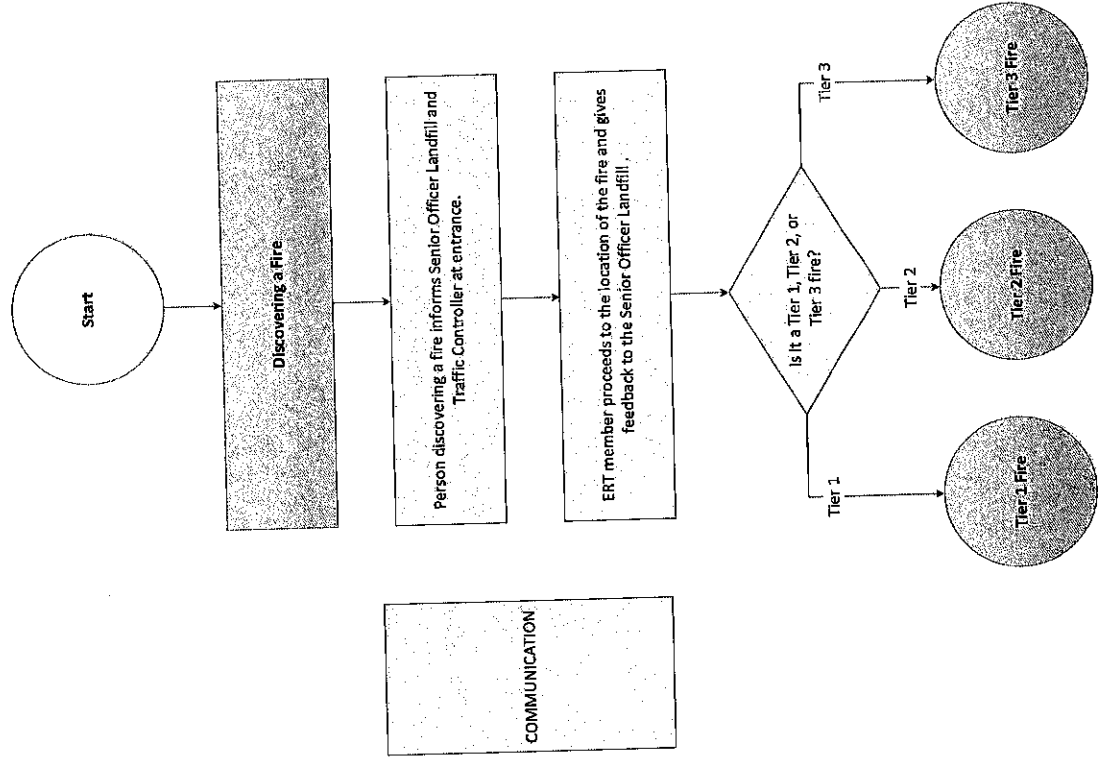
6.3 Fire – AD Plant

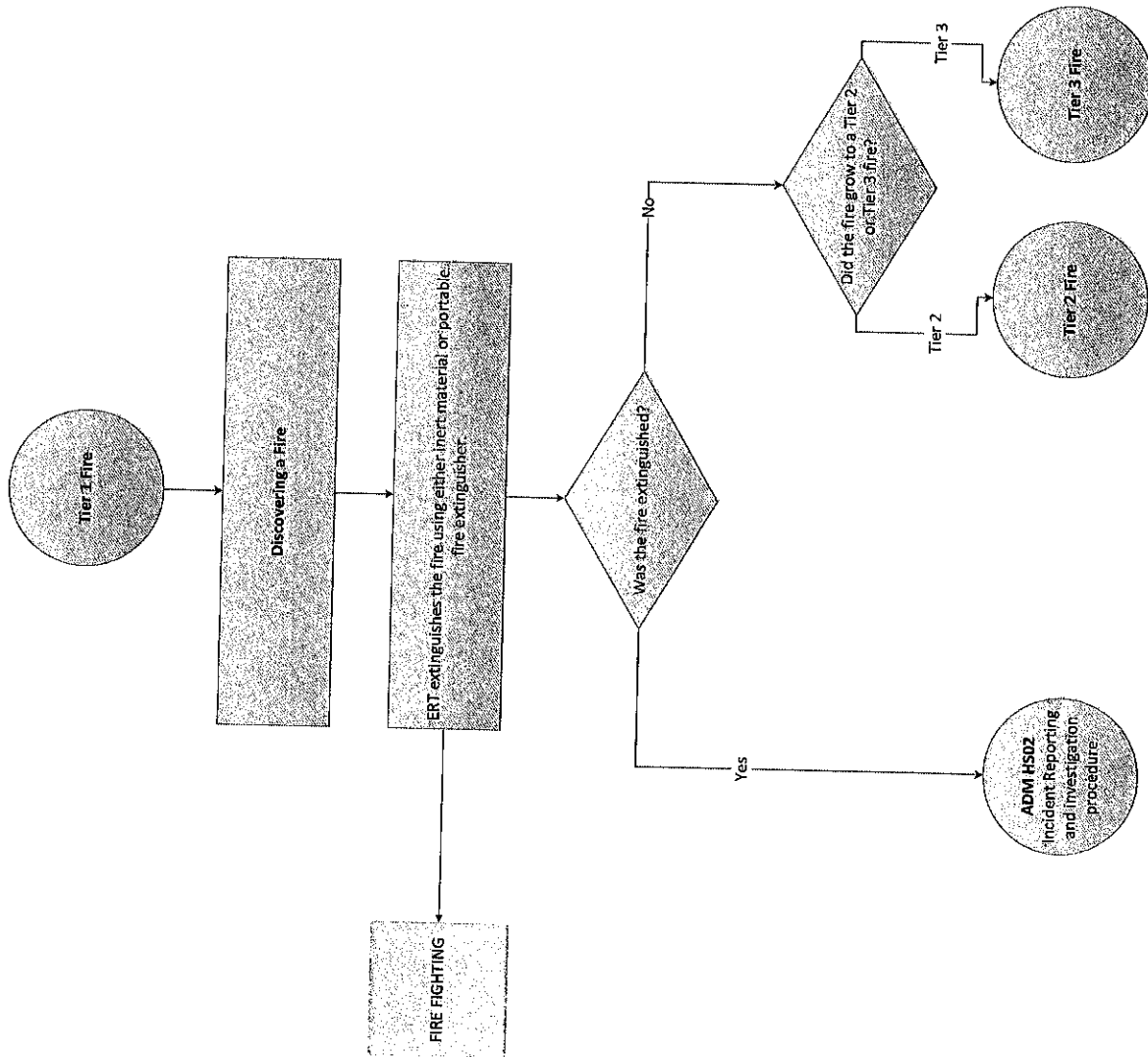


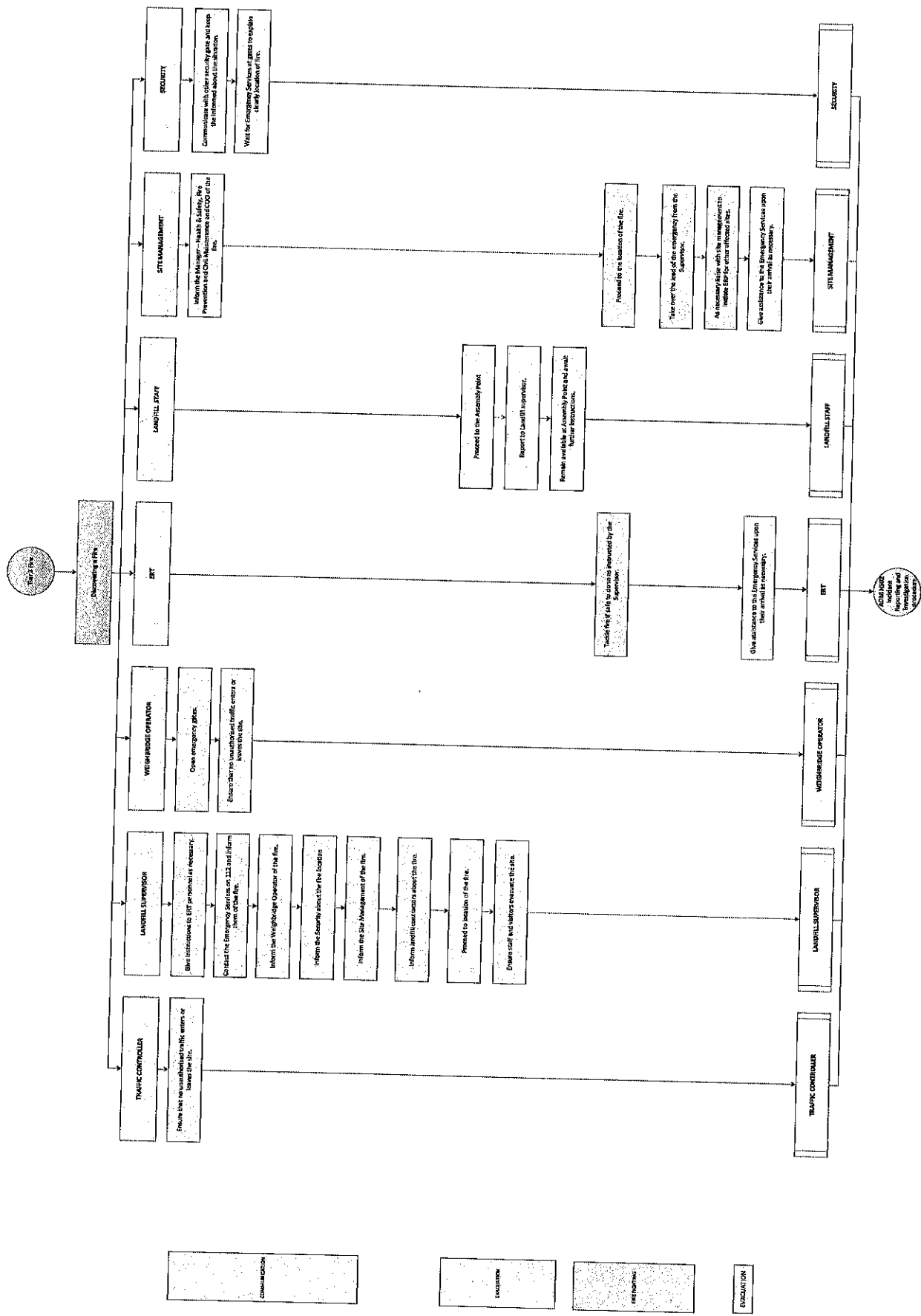




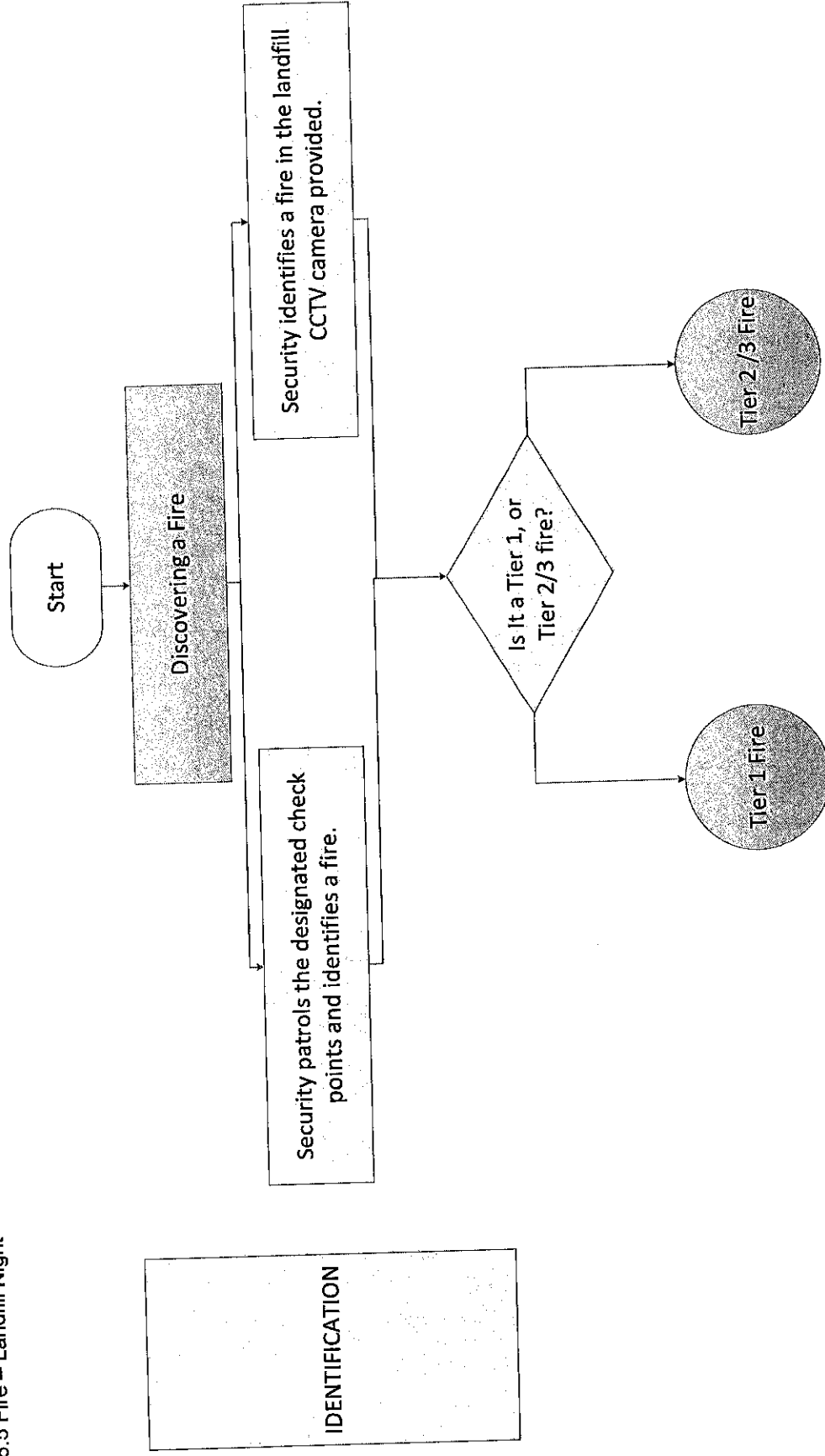
6.4 Fire – Landfill Day

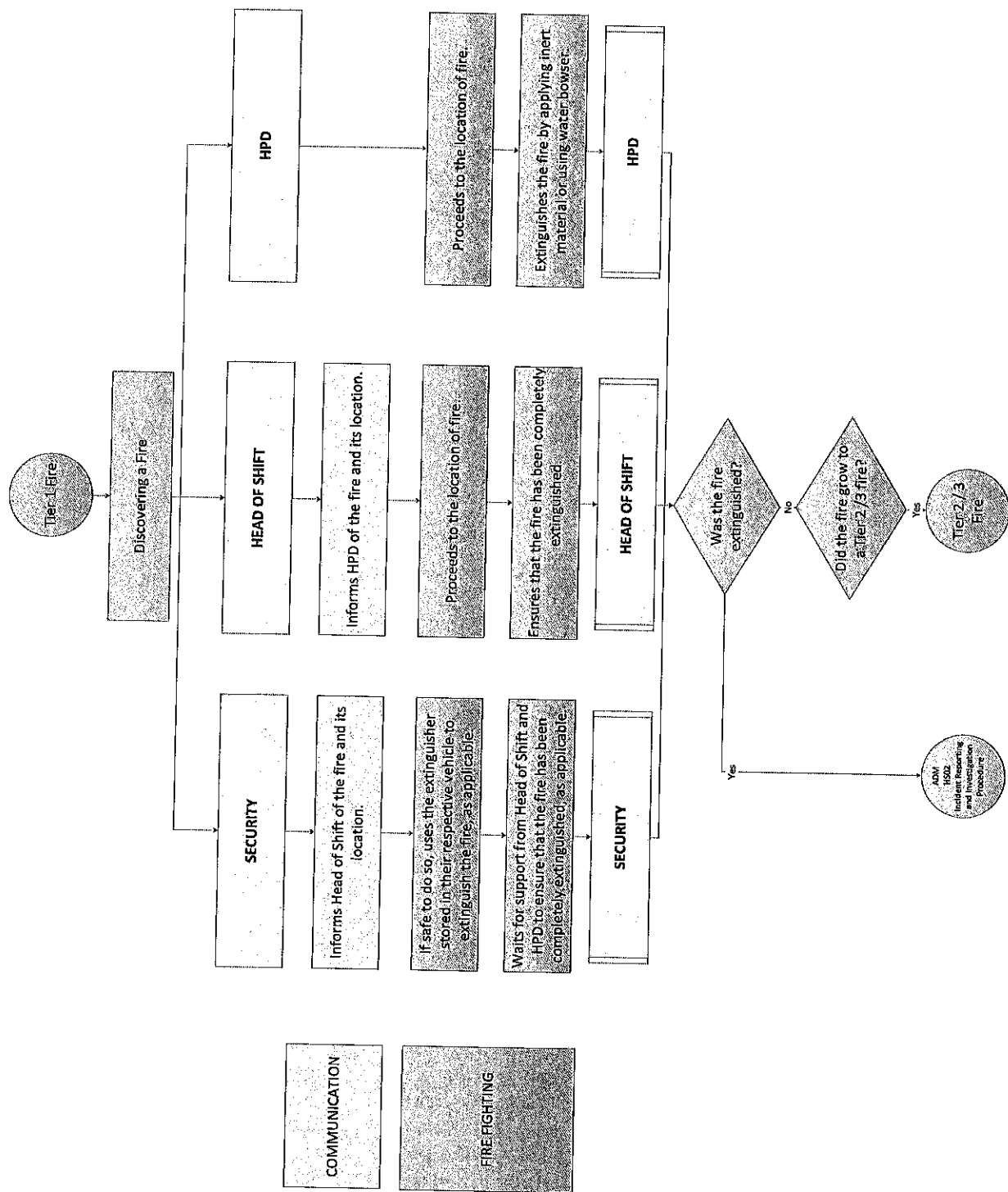


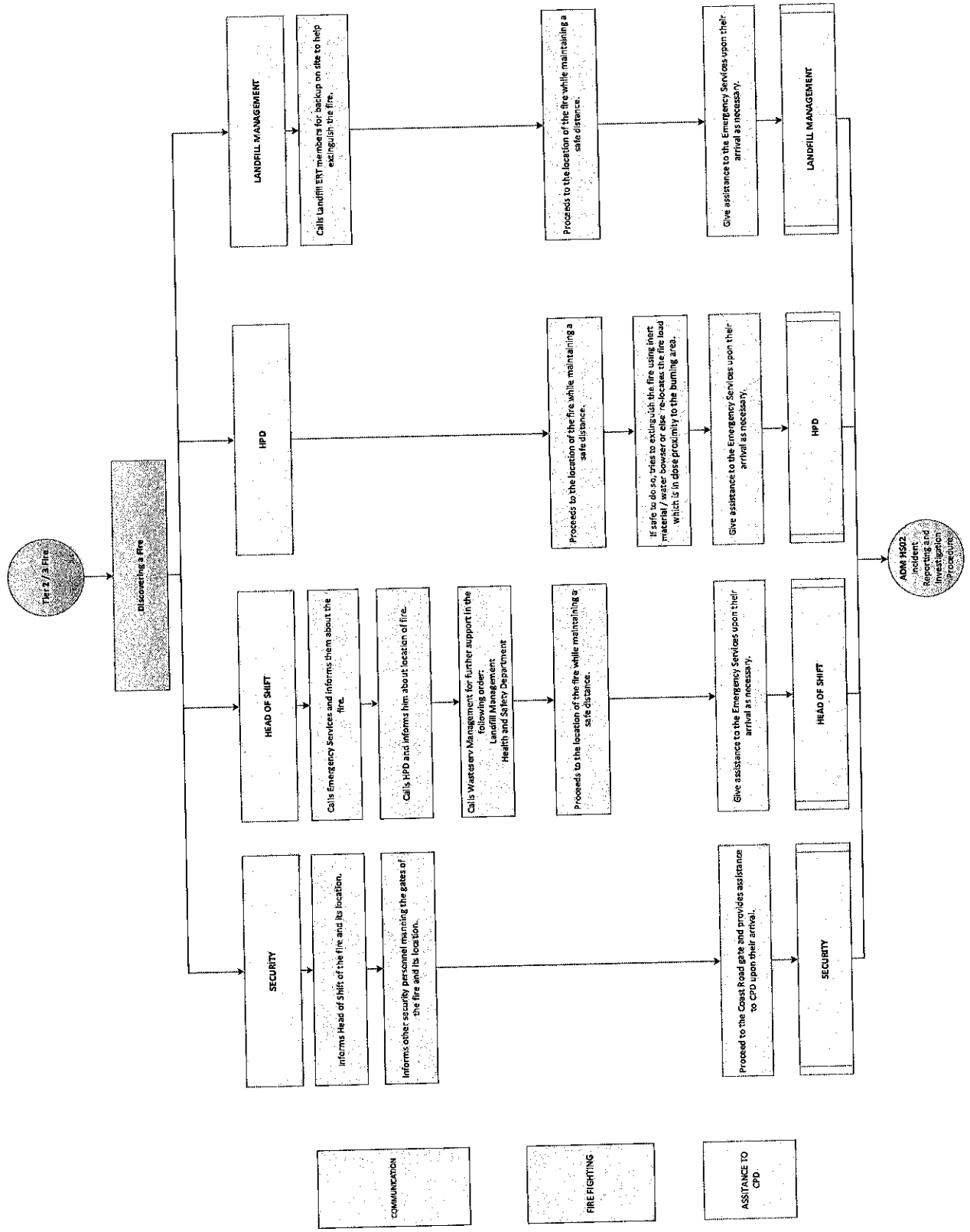




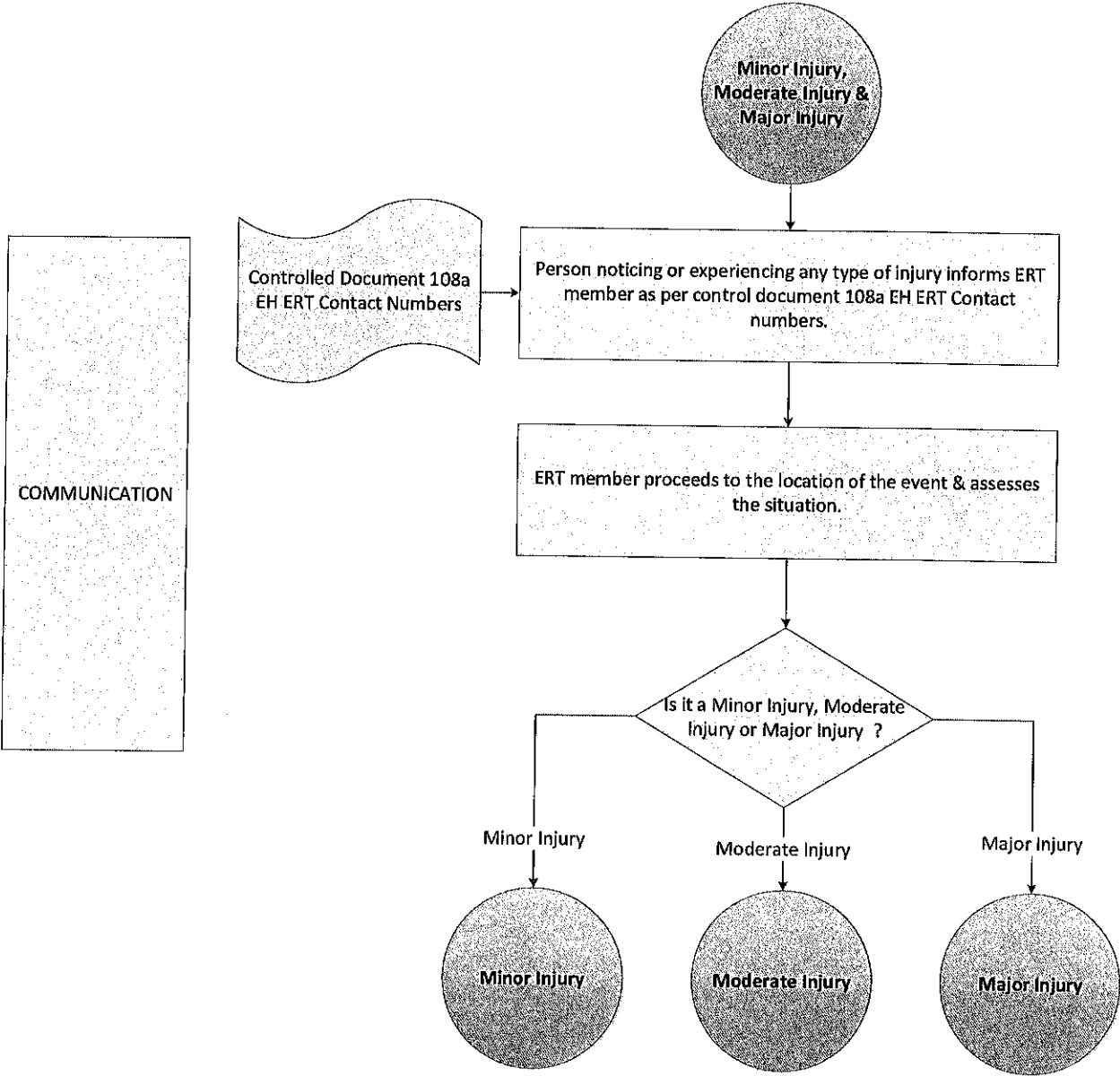
6.5 Fire – Landfill Night

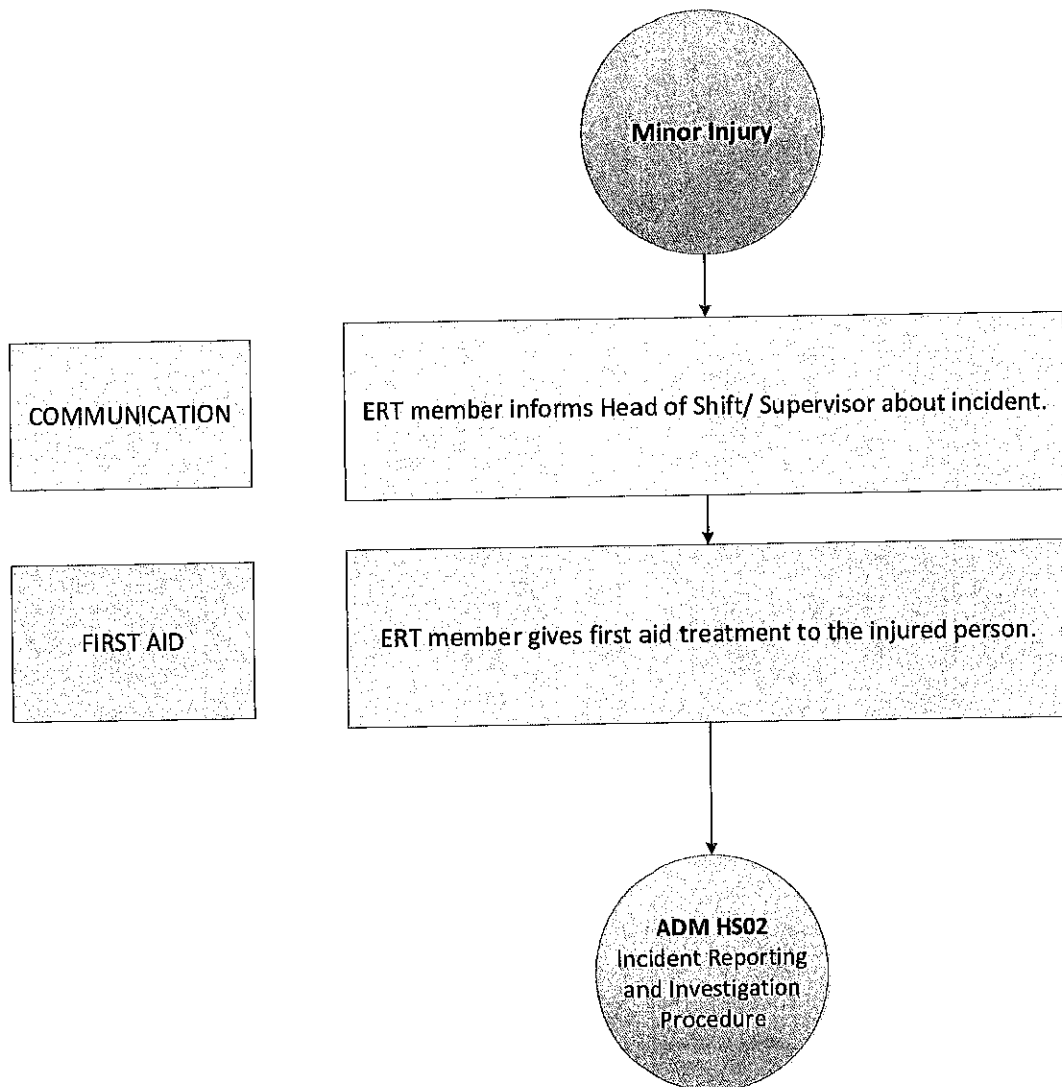






6.6 Injury



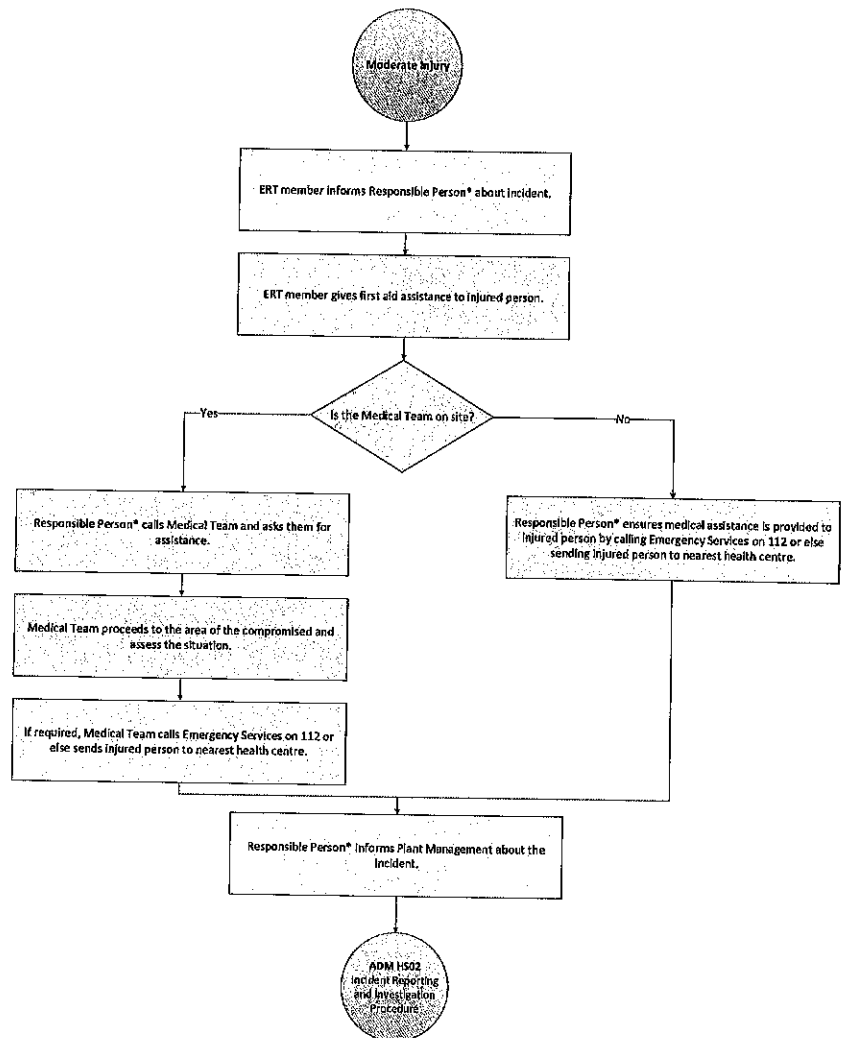


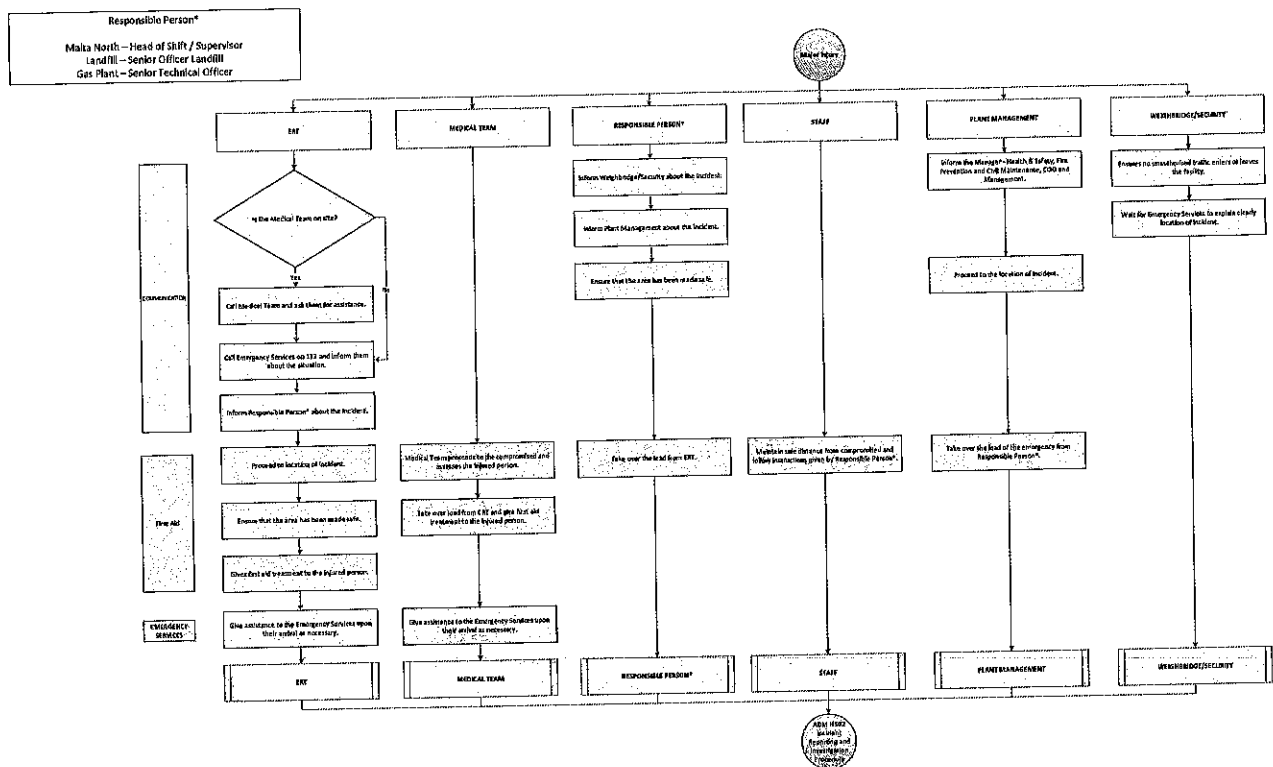
Responsible Person*
Malka North – Head of Shift / Supervisor
Landfill – Senior Officer Landfill
Gas Plant – Senior Technical Officer

COMMUNICATION

FIRST AID

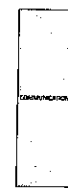
COMMUNICATION





Responsible Person*

Malte North – Head of Shift / Supervisor
Landfill – Senior Officer Landfill
Gas Plant – Senior Technical Officer



List of personnel to be kept on site

In case of a major incident a member of the management might decide to send some of the employees home until the emergency has been dealt with. In any case, the following personnel should be kept available on site:

- Members of the Emergency Response Team
- Security personnel (including Head of Security)
- Storekeeper/s
- Driver/s
- Cleaner/s